



polyfabrics
australia



We're celebrating
20 years of business



TEC Mat™ Coir

Erosion Control

POLYFABRICS AUSTRALIA PTY LTD | ABN. 12 009 223 278 | W. www.polyfabrics.com.au
NEW SOUTH WALES: A. 5 FROST RD, CAMPBELLTOWN NSW 2560 | T. (02) 4627 6444 | F. (02) 4627 6488
QUEENSLAND: A. UNIT 1A 74-76 MAGNESIUM DRIVE, CRESTMEAD QLD 4132 | T. (07) 3278 5888 | F. (07) 3278 5855



TEC Mat™ Coir

TEC Mat™ Coir is a natural fibre matting made from 100% natural coconut fibre that is spun and woven into a matting available in various grades. TEC Mat™ Coir is an open weave geotextile that is fully biodegradable adding organic matter to the soil. As coir is an abundant and renewable resource, TEC Mat™ Coir provides a range of environmentally friendly products that are widely used in civil engineering and for land and slope stabilisation applications. When vegetated, it has the mechanical strength necessary to hold soil in place and prevent erosion. The coir netting breaks up runoff from heavy rains and dissipates the energy of flowing water and wind. TEC Mat™ Coir also promotes the growth of new vegetation by absorbing water and preventing the topsoil from drying out.

TEC Mat™ Coir has double the life of jute and higher tensile strength than other organic geotextiles with a longevity of around five years. This allows ample time for natural vegetation to establish and therefore stabilise the area.

TEC Mat™ Coir is ideally suited for preventing and controlling erosion even on steep slopes. When installed according to our recommendations and planted into or seeded, the TEC Mat™ will not only stabilise the area but also retain moisture and assist seed germination.

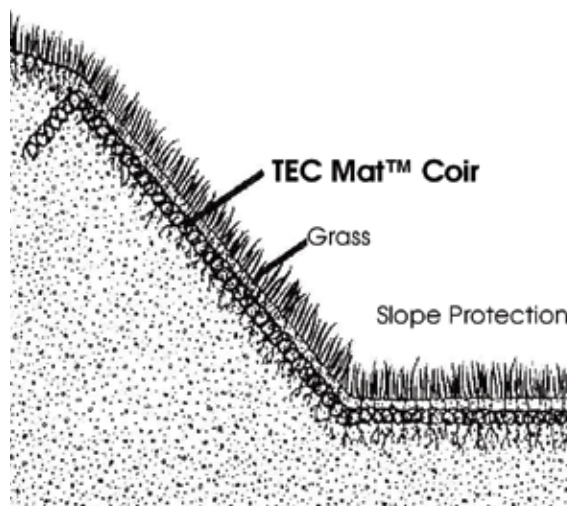
Technical Specifications as supplied by the manufacturer

	TMC4	TMC7	TMC9
Roll Size	2m x 25m	2m x 25m	2m x 25m
Colour	Brown	Brown	Brown
Material	Coir Fibre	Coir Fibre	Coir Fibre
Thickness (at 2Kpa)	7mm	7.5mm	7.5mm
Flow Velocity (observed)	2.7m/sec	3.3m/sec	4.8m/sec
Weight (nominal)	400 gsm	700 gsm	900 gsm
Open area measured	65%	50%	39%

Installation Instructions

TEC Mat™ Coir is an effective way to prevent soil erosion on slopes and re-establish natural vegetation. The coir matting is easy to install and is fully biodegradable. Apart from the usual maintenance required to sustain the vegetation, no further work is needed after the main installation.

1. Prepare the area to be treated to a smooth even grade. Remove all protruding rocks, root stumps, etc. and treat the soil to promote maximum plant growth.
2. Lay the TEC Mat™ Coir rolls in the direction of water flow. Adjoining rolls should be overlapped by a minimum of 100mm.
3. TEC Mat™ Coir should be overlapped away from prevailing wind and water flow direction.
4. A trench, no less than 300mm deep, should be dug at the top of the embankment. Peg the TEC Mat™ Coir down into the trench at a minimum of 1m centres or closer. Backfill the trench and compact.
5. Depending on the steepness of the slope, TEC Mat™ Coir should be pegged at a minimum of 1m centres, (i.e. the more pegs used, the more secure the matting will be) with particular attention being paid to side and end runs. Side and downhill joins should overlap by no less than 100mm with the top run overlapping.
6. As water velocities increase, TEC Mat™ Coir should be pinned at reduced centres.
7. Peg down the nettings as above using steel pegs to suit the site.
8. Vegetate the site as specified.
9. Maintain and water the site as required to promote the growth of vegetation.



Consult Polyfabrics Australia Pty Ltd or a certified Engineer for site specific installation instructions.