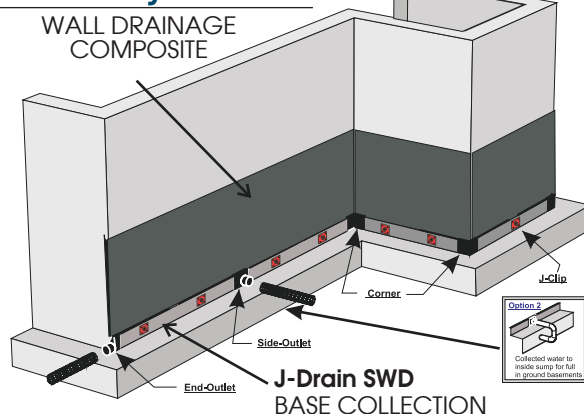


Applications

- Basement Foundations
- Retaining Walls
- Planters
- Bridge Abutments

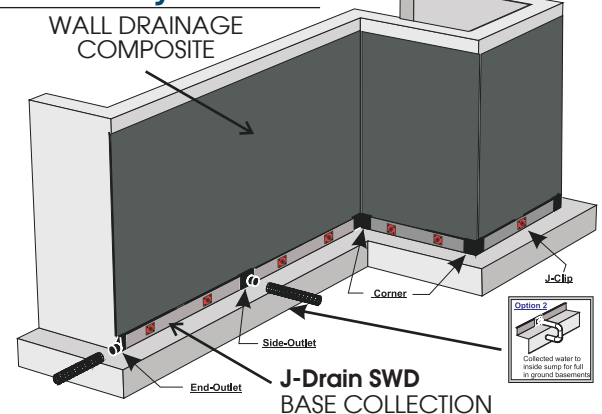
J-Drain Wall System JD-10



J-Drain SWD plus J-Drain Wall System JD-10

Combines J-Drain SWD collection system with partial J-Drain wall drainage system JD-10. This allows a passage for water towards the bottom of the foundation wall to the collection system.

J-Drain Wall System JD-10



J-Drain SWD plus full coverage J-Drain Wall System JD-10

Combines J-Drain SWD collection system with full coverage of J-Drain wall drainage system JD-10. Full wall coverage helps protect the waterproofing and forms a barrier between the soil and foundation wall.

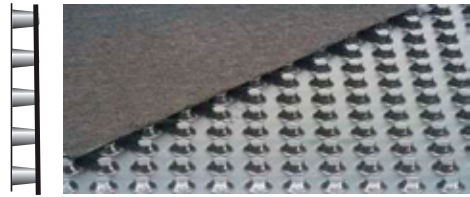
This also allows a passage for water towards the bottom of the foundation wall to the collection system.

JD-10 Sheet Drain Drainage

J-Drain JD-10

Prefabricated Drainage Composites

J-Drain JD-10 performs a multi-faceted role by providing protection for waterproofing systems and managing sub-surface water around building foundations. Soil backfill is retained by a filter fabric while allowing water to pass into the drainage core providing hydrostatic relief. Collected water is then conveyed to a proper collection system.

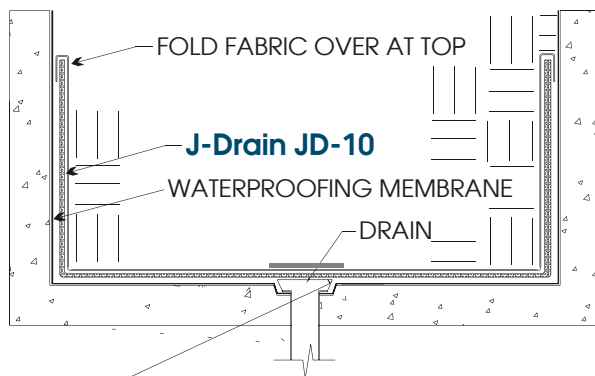


Consists of an impermeable polymeric sheet cusped under heat and pressure to form a high flow dimpled drainage core. The core is then bonded to a layer of nonwoven filter fabric. The filter fabric retains soil or sand particles as well as freshly placed concrete or grout, allowing filtered water to pass into the drainage core.

Maintains a very high flow rate while providing a higher compressive strength for greater depths. A very popular choice for vertical and horizontal single sided drainage applications. Moderate duty.

Applications:

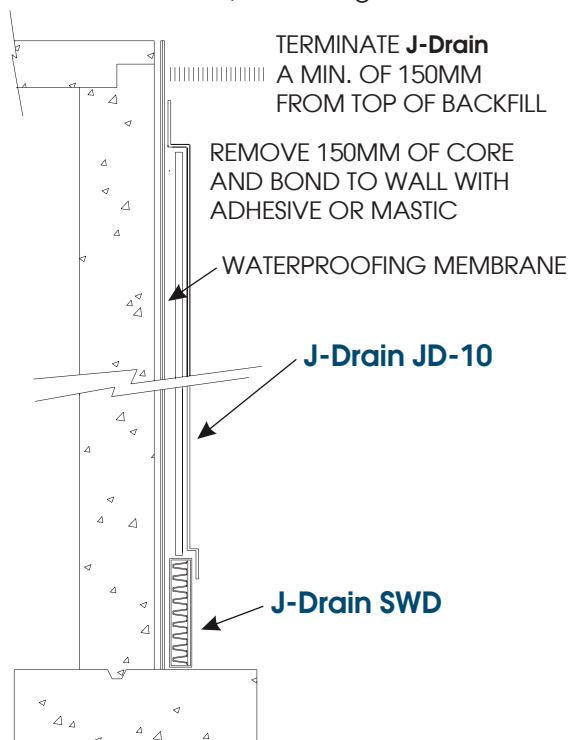
Planters & Roof Gardens



NOTE: When using J-Drain JD-10 cut and remove drainage core and cover with an aluminium plate as shown.

Applications:

Foundation Wall / Retaining Wall



Physical Properties

Core	
*New High Density Polyethylene Core	
More chemically resistant	
Higher compressive strength	
Holds up better to the elements	
Compressive Strength (ASTMD-1621)	528 kN/m
Thickness (ASTM-1777)	10.16 mm
Flow (ASTD-4716) i=1.0	223 l/m/m width

Fabric	
Flow (ASTMD-4491)	5698 l/m/m
Puncture (ASTMD-4833)	300 N
EOS (ASTMD-4751)	0.2 mm
Grab Tensile (ASTMD-4632)	450 N
Roll Length	15.24 m
Roll Widths	1.22m
Roll Weight	18 kg

Consult Polyfabrics Australia Pty Ltd or a certified Engineer for site specific installation instructions.

Made in America

The information presented herein is provided for reference purposes only. It is intended for use as a guide and will not apply to every circumstance. Suitability of products will vary as a result of site conditions and specific requirements. Final determination of the suitability of any information or material for the use contemplated, or its manner of use and whether the use is applicable, is the sole responsibility of the user. The brochure is subject to change arising from new developments and findings. All dimensions are nominal.

June 2011